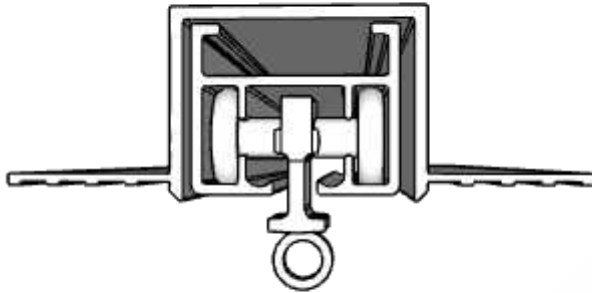


Instructions - Track Drilling Supplement

Congratulations on your purchase of a specialty system from DEL Motorized Solutions.

If you have any questions, please call technical support at 1-866-446-6867

or email us at info@motorizedsolutions.com



Important Notes - Please Read Before Installing



CAUTION: RISK OF FALLING OBJECTS

Securely install the system per the mounting instructions. Failure to do so could result in injury.



All mounting surfaces must be level.



Perfect Fit and hardware are to be anchored into wood blocking. If wood blocking is not available, you must use appropriate fasteners (not included) to support the weight of the system and load.



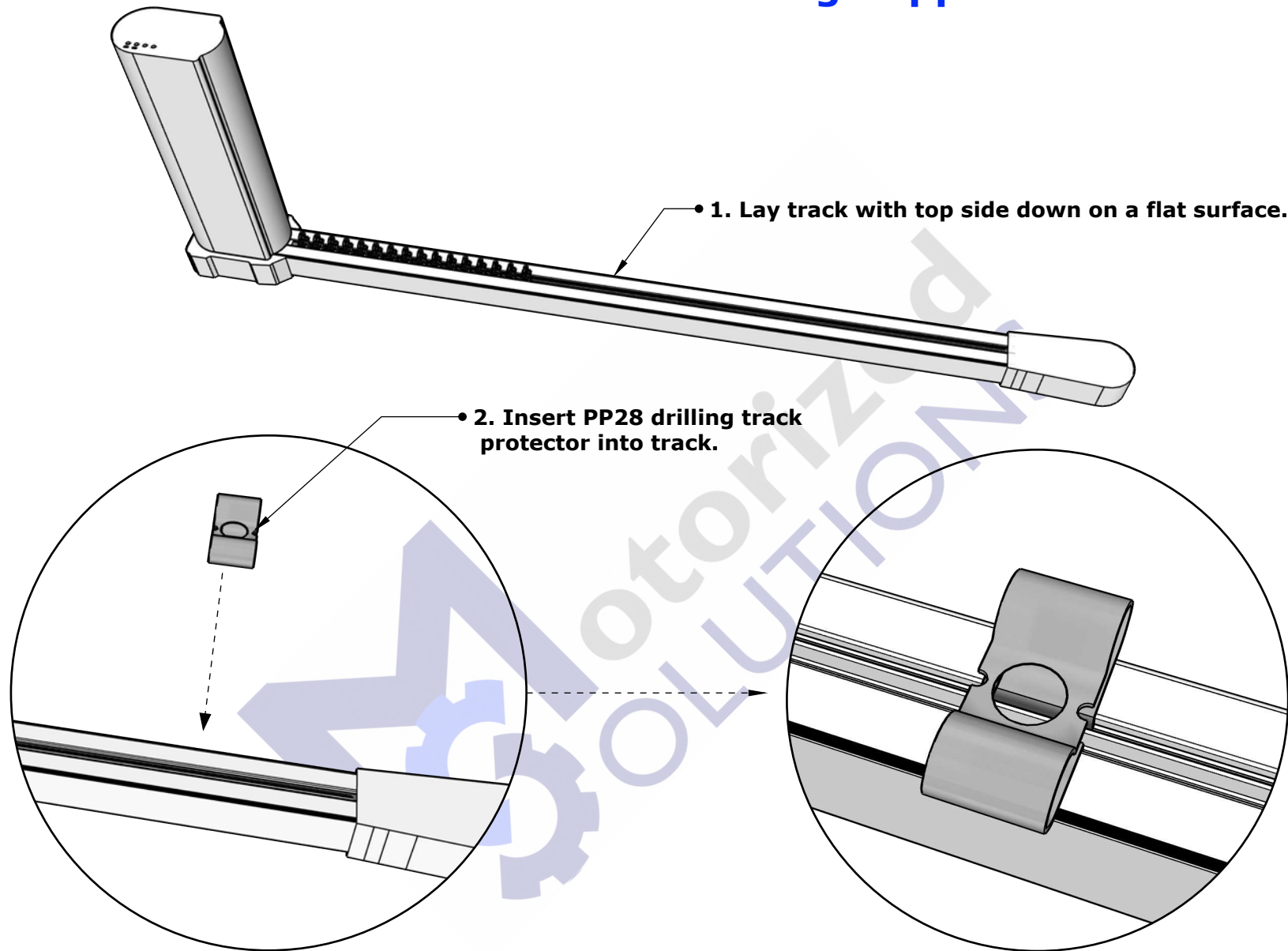
Pre-drill all holes with the appropriate size bit.

TOOLS REQUIRED

Pencil, Tape Measure, Powered Screwdriver, Drill, Level, 1/4" Drill Bits, #6 Robertson Trim Screws, Square Screwdriver/Robertson Screwdriver.



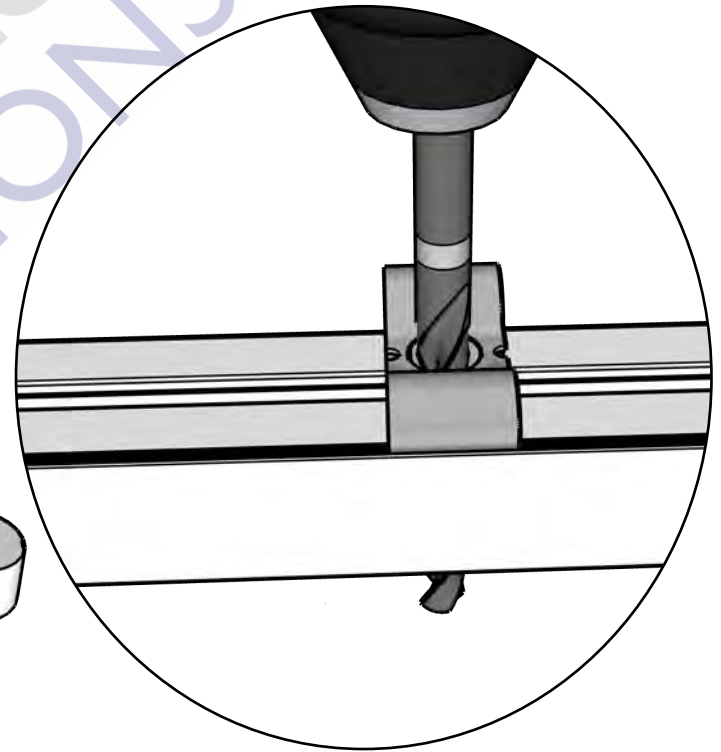
Instructions - Track Drilling Supplement



Instructions - Track Drilling Supplement

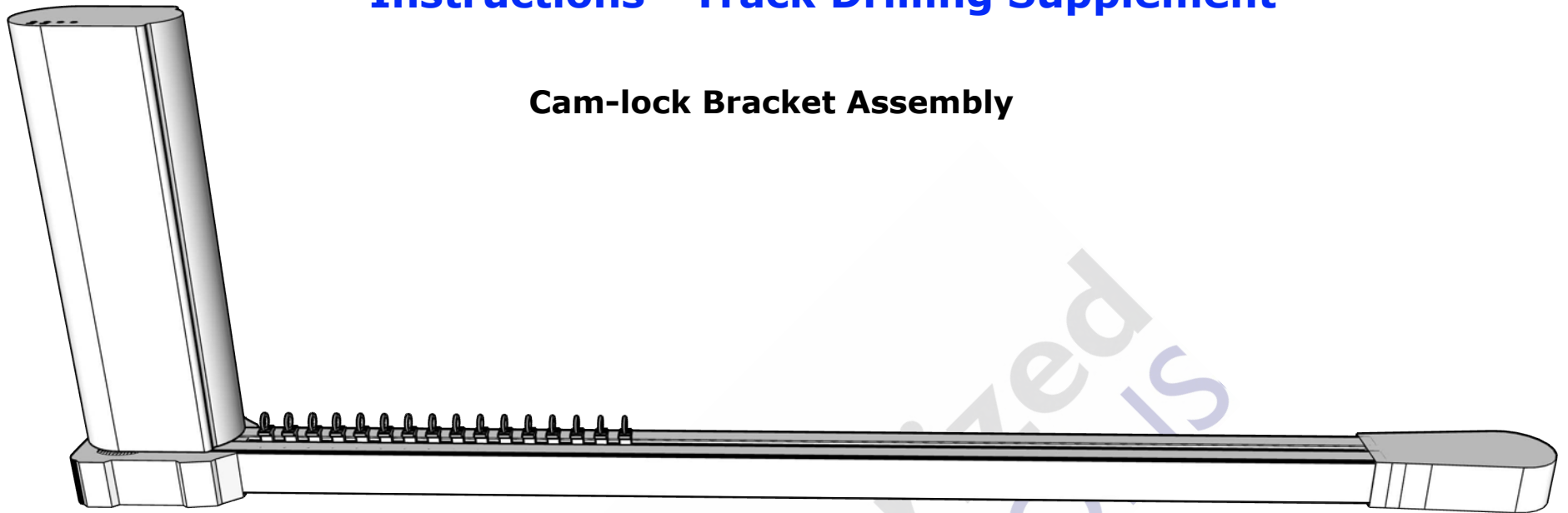


- 3. Holding the drill level, drill a 1/4" hole through the top of the track. Take caution to clear the belt, carriers, and strings connecting the carriers.

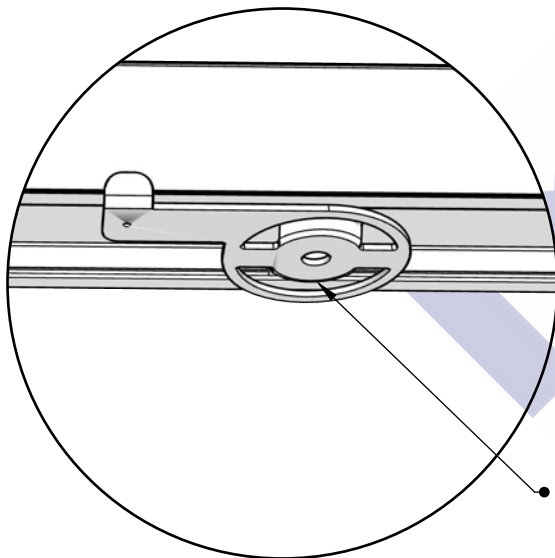


Instructions - Track Drilling Supplement

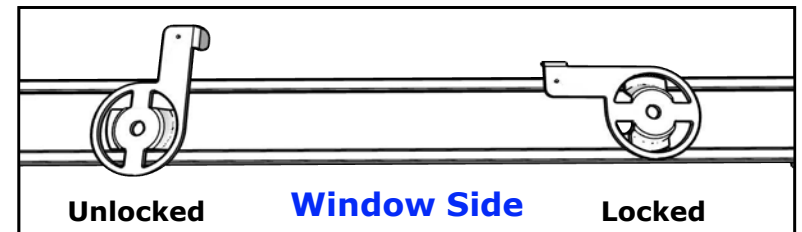
Cam-lock Bracket Assembly



- 4. Insert twist bracket over the hole.

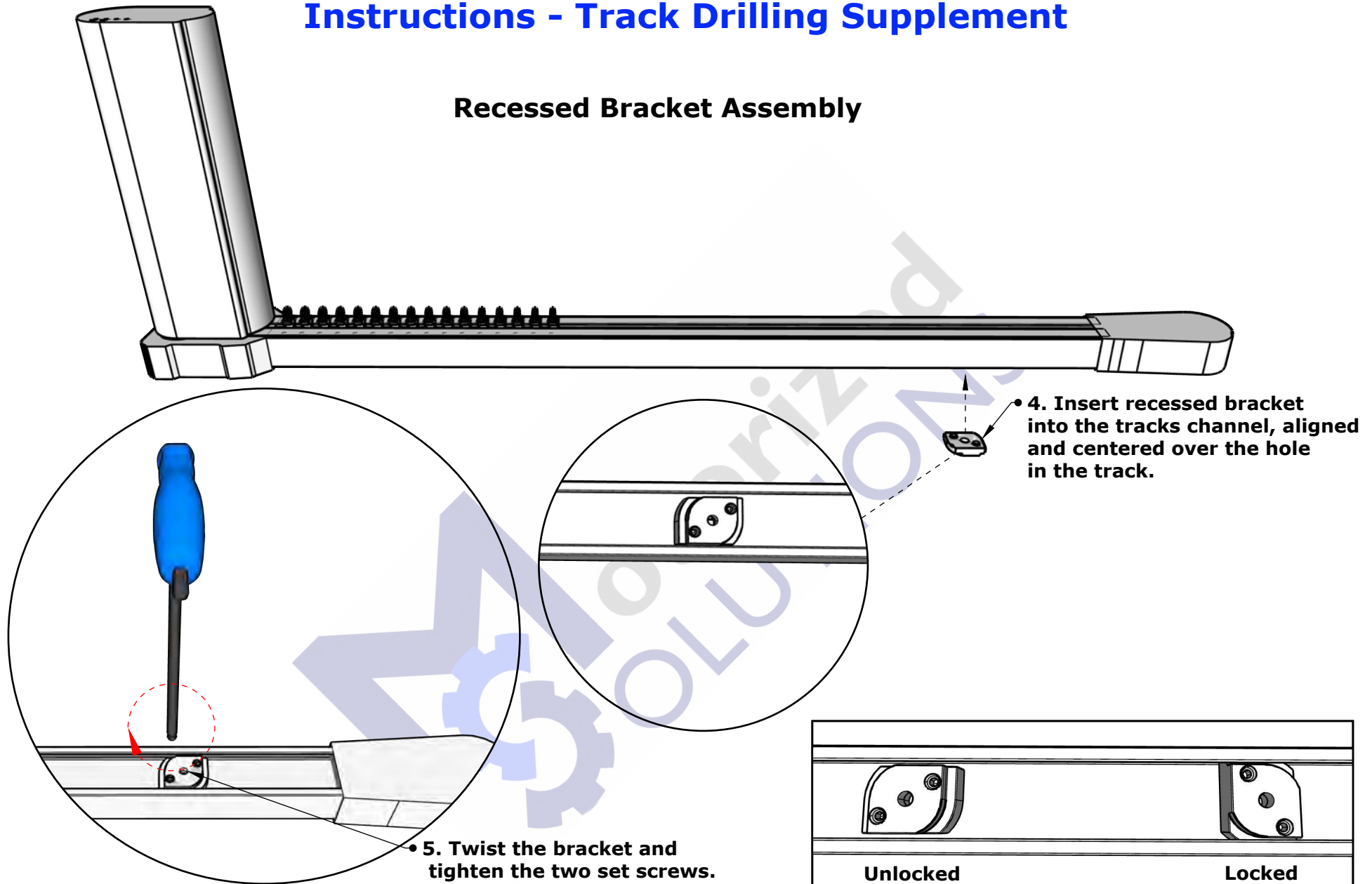


- 5. Twist the bracket to lock it in place.

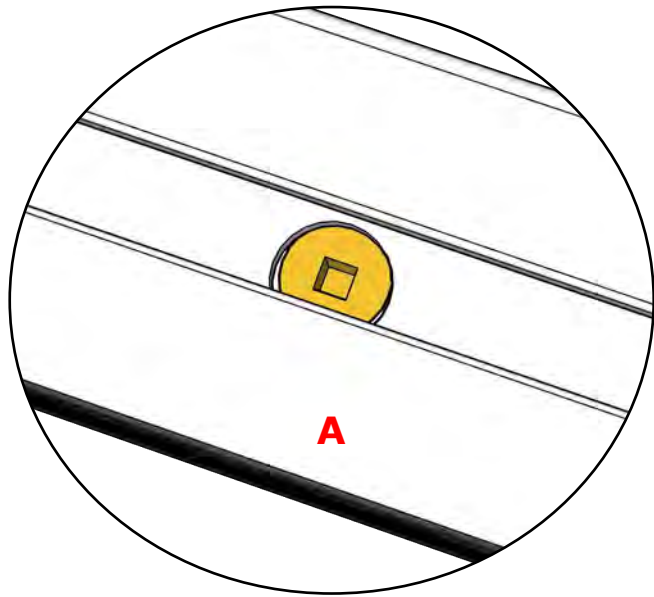


Instructions - Track Drilling Supplement

Recessed Bracket Assembly

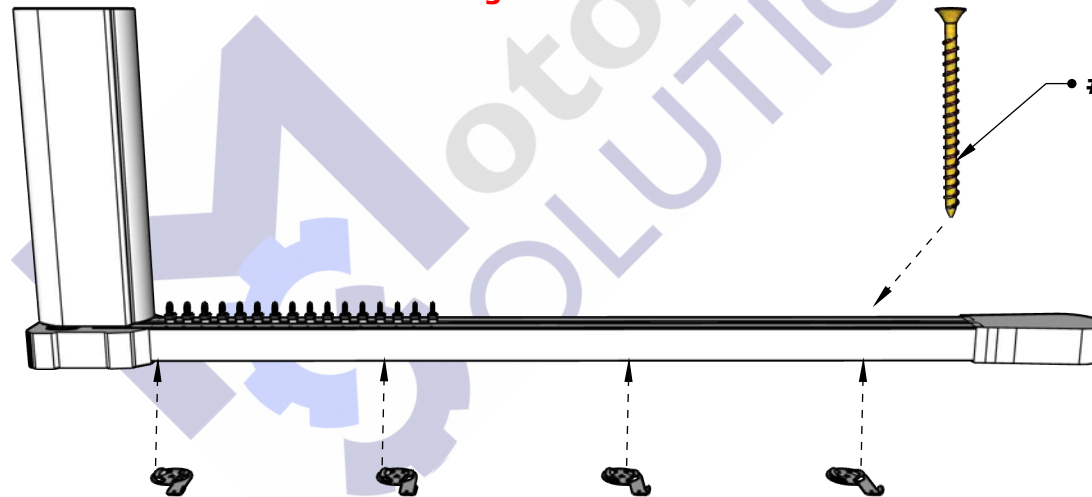
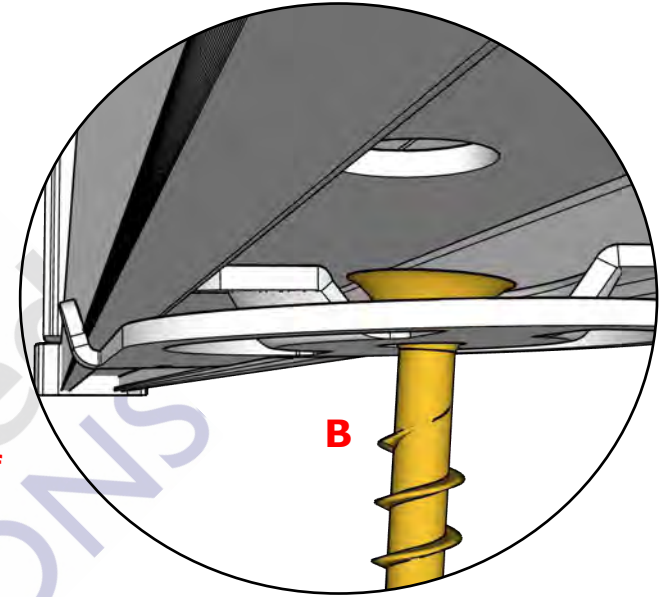


Instructions - Track Drilling Supplement



Note: The screw head will go through the hole in the track and catch the bracket. If the screw head does not go through the track, use a screw with a smaller head.

See diagrams A and B.



• #6 Robertson Trim Screw

6. Repeat steps 1 through 5 for each anchor location.